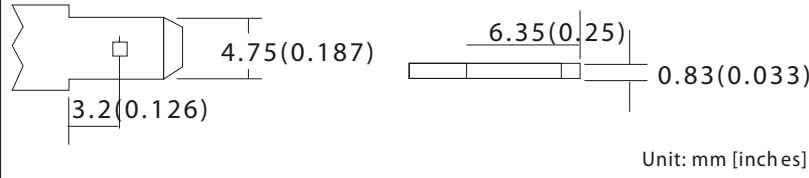


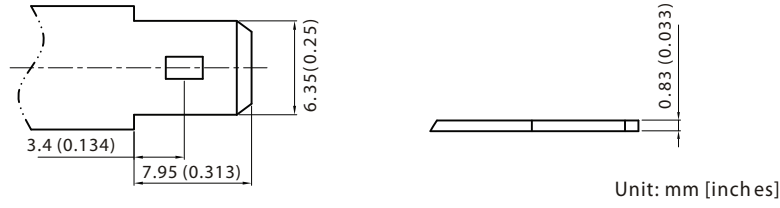
## F1 Terminal

FASTON TYPE (Copper) quick disconnect tabs; silver coating for better conductivity



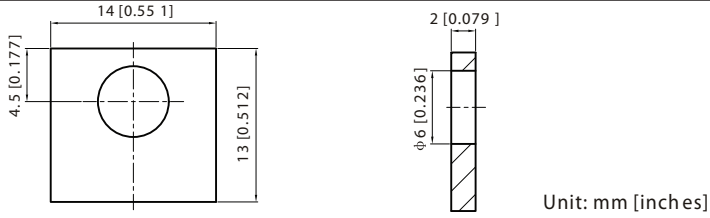
## F2 Terminal

FASTON TYPE (Copper) quick disconnect tabs; silver coating for better conductivity



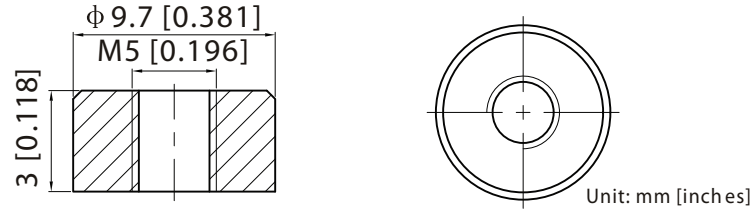
## NB1 Terminal

Brass Coated with Tin  
Torque: 3.9 ~ 5.4 Nxm (34.39 ~ 47.75 in\*lbs)



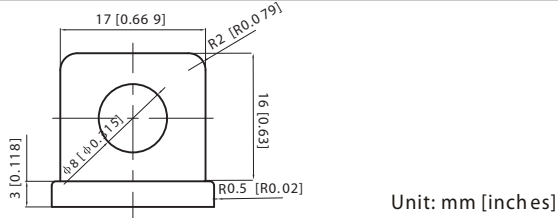
## R1 Terminal

RECESSED THREADED INSERT 5mm STUD  
Torque: 2.0 ~ 3.0 Nxm (17.69 ~ 26.53 in\*lbs)



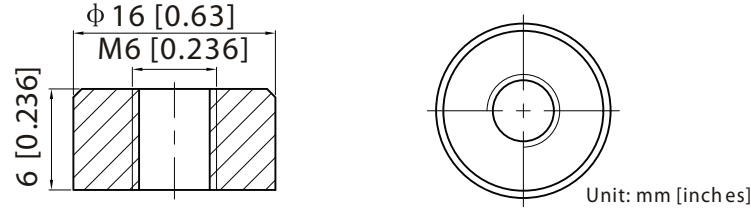
## NB2 Terminal

Brass Coated with Tin  
Torque: 3.9 ~ 5.4 Nxm (34.39 ~ 47.75 in\*lbs)



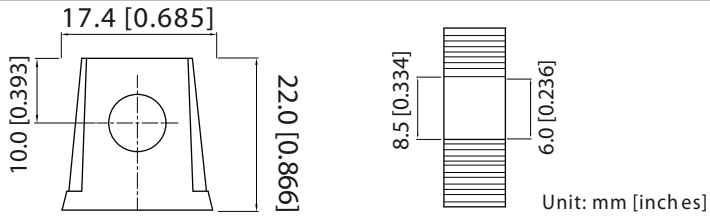
## R2 Terminal

RECESSED THREADED INSERT 6mm STUD  
Torque: 3.9 ~ 5.4 Nxm (34.39 ~ 47.75 in\*lbs)



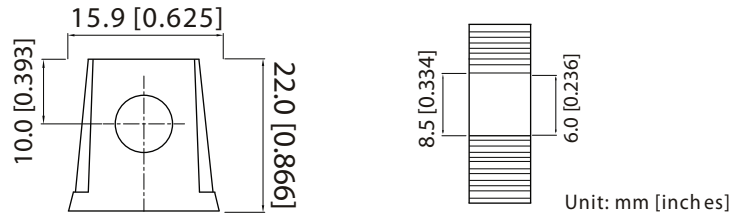
## NB3 Positive

Lead  
Torque: 11 ~ 14.7 Nxm (97.28 ~ 130 in\*lbs)



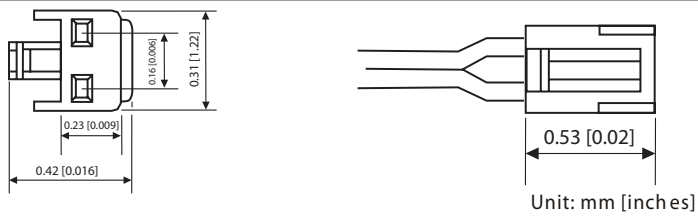
## NB3 Negative

Lead  
Torque: 11 ~ 14.7 Nxm (97.28 ~ 130 in\*lbs)



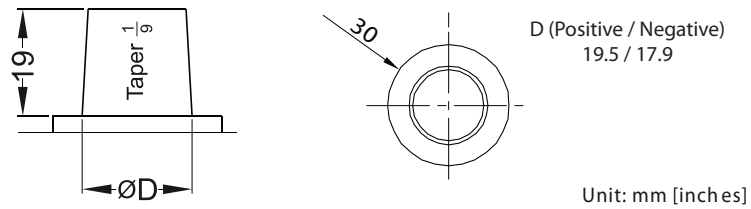
## WL Terminal

JST No. VHR-2N (JST SVH-21T-P1.1)  
Wire AWG #20 UL1007



## SAE Terminal

AUTOMOTIVE POST  
Torque: 5.6 ~ 7.9 Nxm (50 ~ 70 in\*lbs)



## TT Terminal

THREADED TERMINAL  
Torque: 10.7 ~ 11.9 Nxm (95 ~ 105 in\*lbs)

